



GEMS AMERICAN ACADEMY

UNIFORM GUIDE

Index

	PAGE
➤ Introduction	#
➤ Core Uniform (KG 1 to KG 2 - Boys, Girls)	4
➤ Core Uniform (G 1 to G 5 - Boys, Girls)	5
➤ Core Uniform (G 6 to 11 - Boys, Girls)	6
➤ Core Uniform (G12 - Boys, Girls)	7
➤ PE Uniform (G 1 to G 12 - Boys, Girls)	8
➤ Winter Uniform (All Grades)	9
➤ Additional Items	10
➤ Uniform Care	11
➤ Shopping & Customer Care	12
➤ Sizing	13
➤ Sizing	14
➤ Sizing	15
➤ Sizing	16
➤ Sizing	17
➤ Iron on name label	18
➤ Swimwear	19


Dear Parent,

We would like to take this opportunity to welcome you to Threads
This guide has been put together to assist you on the following :

- Selecting the correct uniform for your child
- Identifying the suitable size
- Maintaining the uniform
- Ordering
- Retail locations relevant to your school
- Information on customer service

We hope that you will find this guide useful. If you have any comments or suggestions relating to this guide kindly email these to support@threadsme.com.

We wish your child all the success for this academic year and would like to thank you for your continued custom and support.

Thanking You,
Team@  threads™

Boys



Blue Polo Shirt
(KG1 to kG2 PE)



Navy Trouser



Navy Shorts
(KG1 to kG2 PE)

Girls



Red Polo Shirt
(KG1 to kG2 PE)



Navy Trouser



Navy Shorts
(KG1 to kG2 PE)



Navy Skort

Boys



Blue Shirt



Navy Trouser



Navy Shorts

Girls



Blue Shirt



Navy Trouser

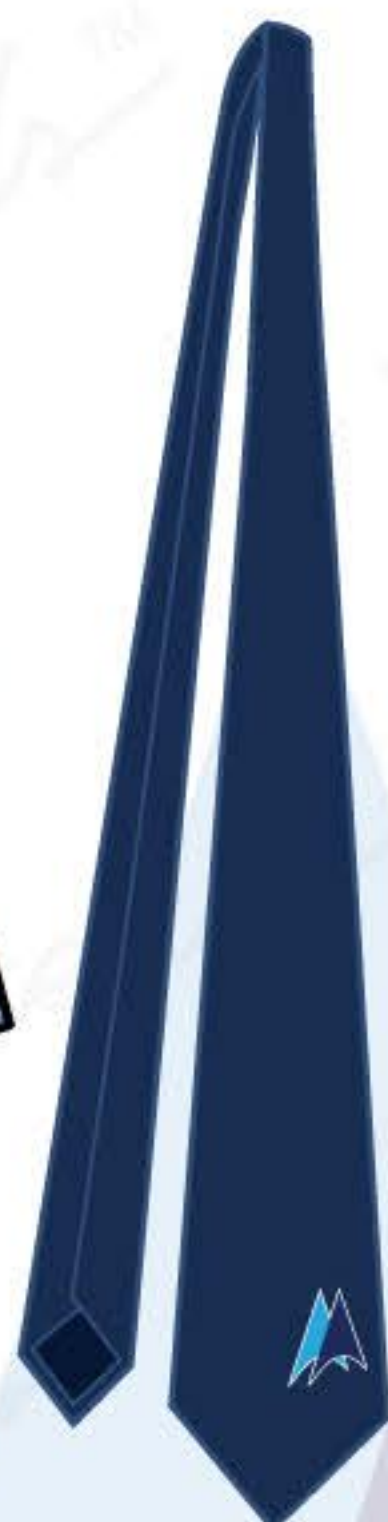


Navy Skort

Boys



Blue Shirt



Navy Trouser

Girls



Blue Shirt

Neck Scarf



Navy Trouser



Navy Skirt

Boys



Blue Shirt



Navy Trouser

Girls



Blue Shirt



Navy Trouser



Navy Skirt

Unisex -G1 to G5



Boys -G6 to G12



Girls -G6 to G12



Unisex - Pullover



Unisex - Hoodie





Navy Bucket cap



Navy Baseball cap



Navy Socks



Navy Tights



White Socks



Black Belt

HAIR BAND & SCRUNCHIES

SHOES (OPTIONAL ITEM)



Boys Black Velcro



Boys Black Lace



Girls Black Velcro



Unisex White Single Velcro



Unisex White Lace

BAGS (OPTIONAL ITEM)



2 INCHES



16 INCHES



8 INCHES



Gym Bag

Currently not available



Note Book Bag



The following guidelines will help you gain longevity from your garment.

WASH CARE SYMBOLS



SKIRTS/TROUSERS/PINAFORE /SHORTS

Wash at 40 °C. Higher temperatures will cause shrinkage, affect the colour or weaken the fibres. Wash dark colours separately. Avoid strong fabric conditioners as they can break the fibres.

Do not bleach. Do not tumble dry pleated garments as the pleats will disappear. For best results simply drip dry after washing.

Warm iron if needed (150°C maximum). If you want to improve the creases, use a steam iron or a clean damp cloth, with a regular iron. Do not iron on top of Print or Embroidery directly, please iron on reverse side. Never use a hot iron directly on the garment.

WASH CARE SYMBOLS



SPORTS SHORTS/TRACK PANTS/PE POLO SHIRTS

Wash at 40 °C. Higher Temperatures will cause shrinkage, affect the colour or weaken the fibres. Wash dark colours separately. Remove promptly. Avoid strong fabric conditioners.

Do not bleach. These products will dry very quickly, if left to dry naturally, but if you want to do tumble dry, pls do it in cool/low setting & remove promptly. Drip dry after washing.

Ironing is not necessary for these products. However if you still want to iron, use a cool iron setting (110°C maximum). Do not iron directly on the garment, place a clean damp cloth between the garment and the iron. Do not iron with excessive heat as this makes the fabric brittle. Do not iron on top of print or Embroidery directly, please iron on reverse side.

WASH CARE SYMBOLS



SHIRTS - BLOUSES
65% Polyester,
35% Cotton weave

Can be machine washed on a Gentle/ polyester/easy care/delicate Setting, with upto 40°C. Avoid strong fabric conditioners. Wash dark colours separately.

Do not bleach. These garments can be tumble dried on a cool/low setting. If the temperature is higher the fibres can be damaged and shrinkage may occur.

With these garments ironing is not always necessary if it is hung during drying, after washing. However if you still want do ironing, change the setting to synthetic/ cool iron (110°C maximum) and do iron. Ironing will be easier if the garment is slightly damp. Do not iron on top of print or Embroidery directly please iron on reverse side.

WASH CARE SYMBOLS



Knitted fabrics
100% acrylic;
combinations of:
wool/nylon, wool/acrylic,
wool/polyester (jumpers,
cardigans, scarves &
hats); cotton/acrylic;
cotton/polyester;
cotton/nylon

Turn the garment inside out before washing, to reduce the loose fibres adhering to the outer surface of other garments. Use Cool 30°C washing with gentle/ delicate/wool setting, with a short spin. Always wash the garment separately, or with similar colour garments. Use only mild detergent if required. Some fabric conditioners may harm the garment fibres thereby increasing pilling

Do not bleach. Do not tumble dry, the fabric can be damaged and the neck, welt and cuffs can lose their elasticity. Always dry FLAT and Dry in the shade (direct sunlight will harm the garment).

NEVER iron on the face fabric of the garment, as it will change the appearance of the garment and cause shine. Always iron the inside of the garment.

SHOE CARE - BLACK

Simply remove excess dirt with a cloth and/ or a brush and apply the cream shoe polish never liquid shine evenly to your shoes.

Make it a point to polish your shoes once in 2 days to restore the appearance of your shoes.

Store your shoes using a shoe tree, this will help the shoe retain its shape. If you don't have a shoe tree, stuff the toe cap with newspaper or tissue.

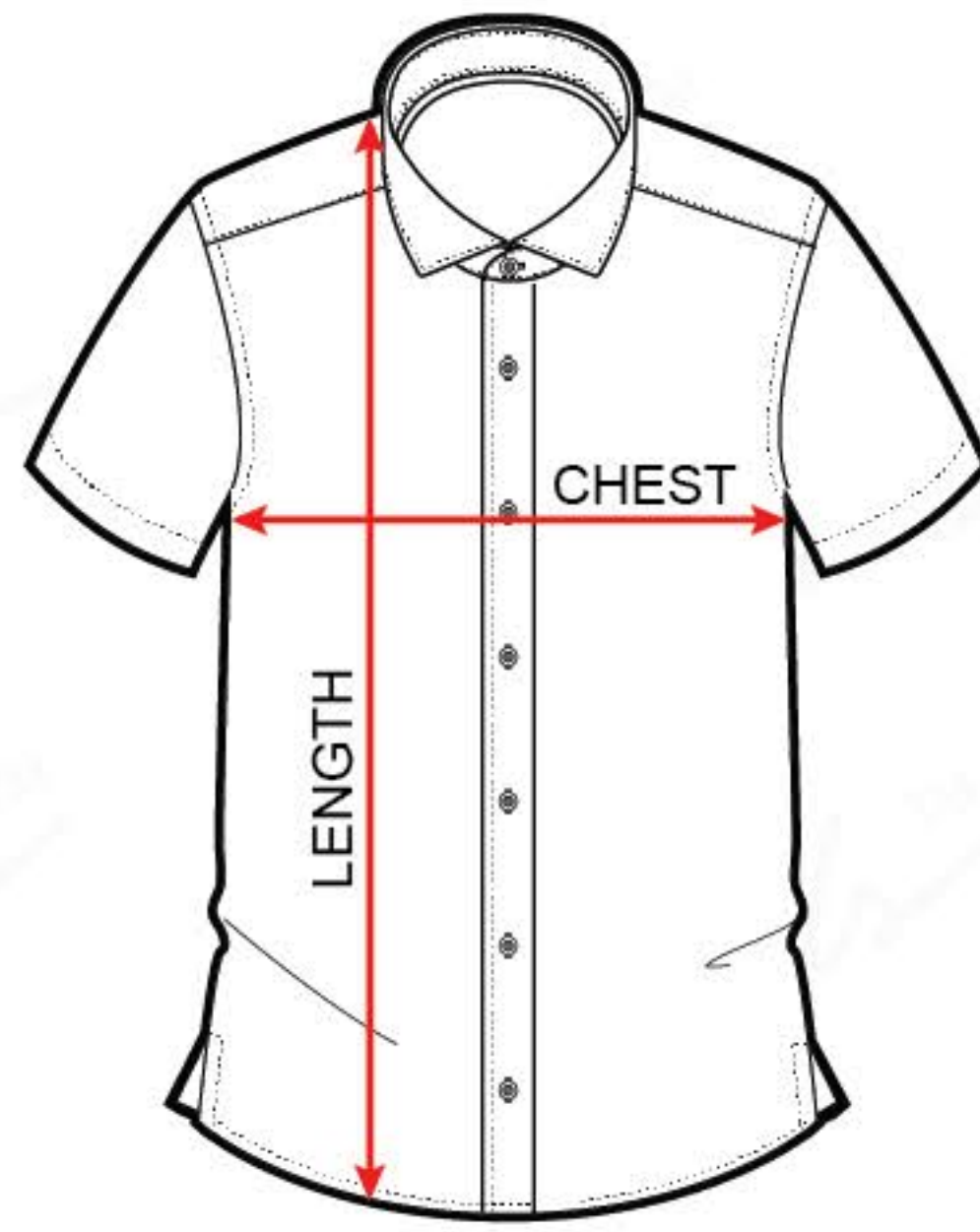
Never store shoes near direct heat.

* KINDLY NOTE THAT ANY PRINTS / LOGOS / EMBELLISHMENTS MUST NOT BE IRONED ON DIRECTLY BUT INSTEAD ON THE REVERSE.

- Visit our retail shop at Abu Dhabi

(For location map please visit - www.threadsme.com or email us on support@threadsme.com) The timing of retail shops will be from 11 am to 9 pm from Saturday to Thursday except peak seasons. During peak seasons, the shops will be operational 7 days a week. Exact date and timings of peak seasons will be displayed in our website.

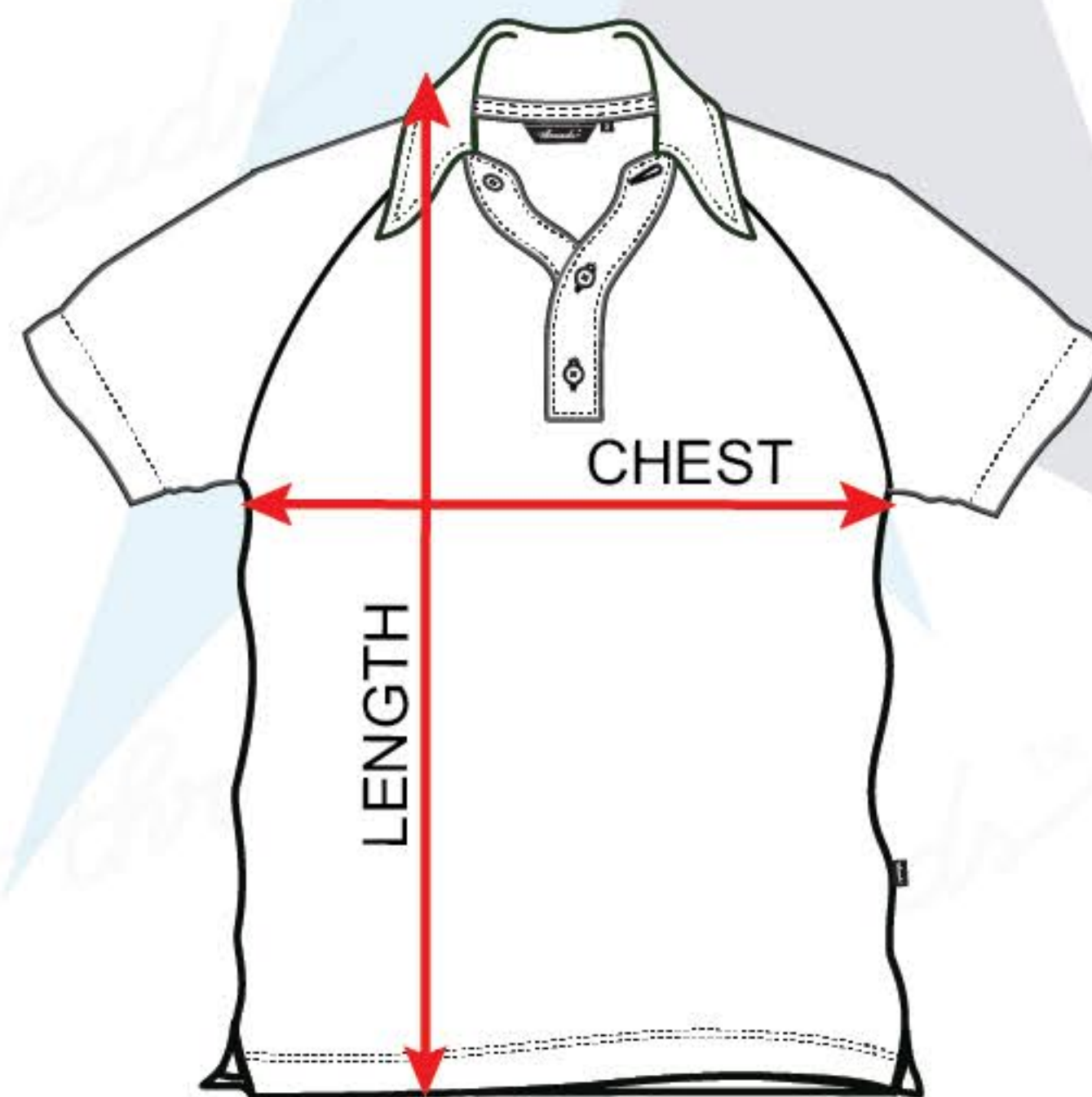
- **Shop online** at www.threadsme.com You can now shop online at www.threadsme.com, Subject to availability your order will be dispatched within 2 - 4 working days to your registered / requested location. Once your order has been dispatched you will be notified of the tracking number and you can track your order online.
- **Made to measure** (custom-made uniforms) option is also available if your preferred size is not in stock. The standard delivery time is 15 days during the off peak seasons and will extend up to 30 days during the peak seasons. To request a made to measure form or require any assistance on made to measure kindly send an email to support@threadsme.com, alternatively you can request an online appointment at www.threadsme.com
- **Online ordering of made to measure uniforms** is available at Threads' e-commerce website. The processes of ascertaining the measurements are clearly indicated with simple diagrams.
- **Free collection point deliveries:** The customers can collect the online order (readymade / made to measure) from any retail shop of Threads as per their conveniences without paying for the courier charges. The collection point needs to be properly indicated at the time of placing the online order.
- At Threads we take our commitment to customer service very seriously. Customer concerns and queries can be registered at support@threadsme.com or through our toll free number (800-THREADS). A customer services representative will respond to your query within 24 working hours.



SHIRT

SIZE:	4	6	8	10	12	14	16	18
AGE:	3-4	5-6	7-8	9-10	11-12	13-14	15-16	YOUTH 1
FULL BODY CHEST:	20.5-21.5	22-23	24-24.5	25.5-27.5	28.5-30.5	31.5-33.5	35-37	38-40
½ GARMENT CHEST:	12.5	13.5	14.5	16	17.5	19	20.5	22
GARMENT LENGTH:	18.5	20	21.5	23	24.5	26	27.5	29

	20	22	24	26				
AGE:	YOUTH 2	YOUTH 3	YOUTH 4	YOUTH 5				
FULL BODY CHEST:	41-43	43.5-45	45.5-47	47.5-49				
½ GARMENT CHEST:	23	24	25.5	26.5				
GARMENT LENGTH:	29.5	30.5	32	33				

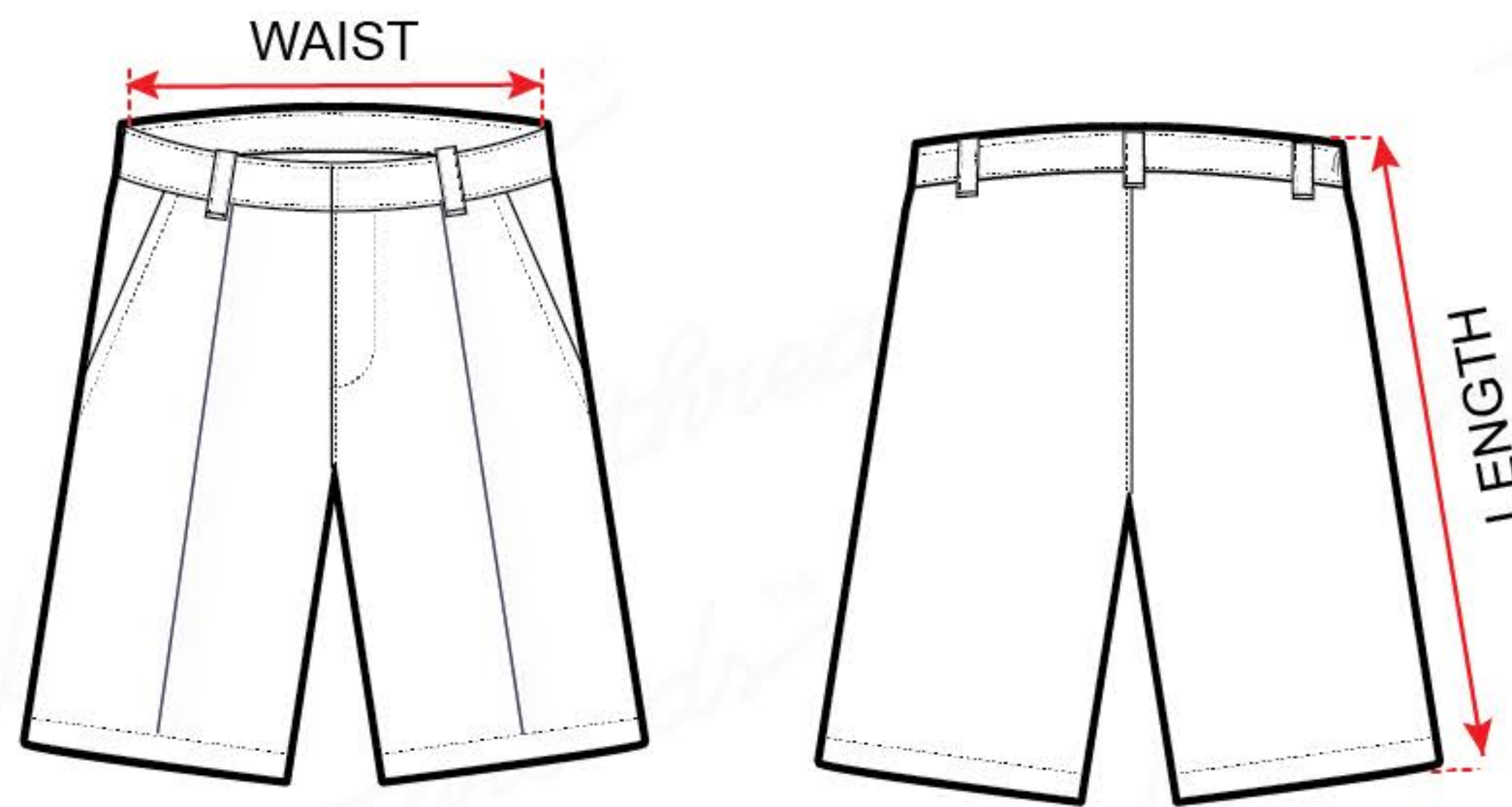


POLO SHIRT

SIZE:	2	4	6	8	10	12	14	16
AGE:	3-4	5-6	7-8	9-10	11-12	13-14	15-16	YOUTH 1
FULL BODY CHEST:	20.5-21.5	22-23	24-24.5	25.5-27.5	28.5-30.5	31-32	32.5-33.5	34-35
½ GARMENT CHEST:	11.5	12.5	13.5	14.5	16	16.5	18	19
GARMENT LENGTH:	15.5	16.5	18	19.5	21	21.5	23.5	24.5

	18	20	22	24	26	28		
AGE:	YOUTH 2	YOUTH 3	YOUTH 4	YOUTH 5	YOUTH 6	YOUTH 7		
FULL BODY CHEST:	36-37	38-40	41.5-42.5	44-46	47.5-48.5	49-50		
½ GARMENT CHEST:	20	21	22.5	24	25	26		
GARMENT LENGTH:	25.5	27	28	29.5	31.5	32.5		

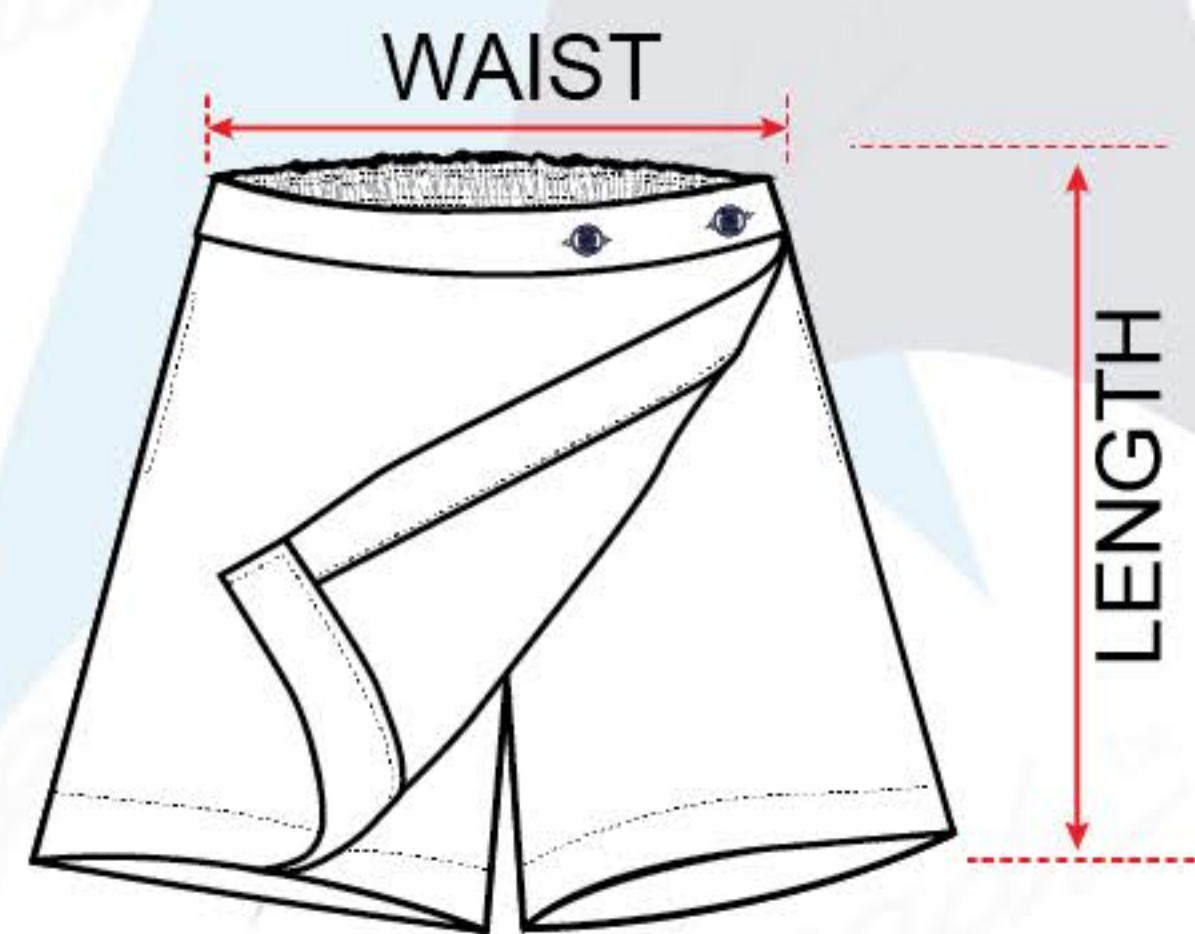
*** All measurements are in Inches.**
THESE SIZES ARE ONLY A GUIDE AND MAY VARY FOR THE INDIVIDUAL BODY TYPE.



SHORTS

SIZE:	2	4	6	8	10	12	14	16
AGE:	3-4	4-5	5-6	7-8	9-10	11-12	12-13	13-14
FULL BODY WAIST:	20-20.5	20.5-21	21-21.5	22-22.5	22.5-23	24.5-25.5	25.5-26	26.5-27
½ GARMET WASIT: (RELAXED)	8.5	9	9.5	10	11	12.5	13.5	14.5
½ GARMET WASIT: (EXTENDED)	11.5	12	12.5	13	14	15.5	16.5	17.5
GARMET LENGTH:	11.5	12.5	13.5	14.5	15.5	16.5	18	19

SIZE:	18	20	22	24	26	28	30	
AGE:	15-16Y	YOUTH 1	YOUTH 2	YOUTH 3	YOUTH 4	YOUTH 5	YOUTH 6	
FULL BODY WAIST:	28.5-29	29.5-30.5	31-33	33.5-35	37-38.5	39-40.5	40.5-42.5	
½ GARMET WASIT: (RELAXED)	15.5	16.5	17.5	18.5	19.5	20.5	21.5	
½ GARMET WASIT: (EXTENDED)	18.5	19.5	20.5	21.5	22.5	23.5	24.5	
GARMET LENGTH:	19	19	19.5	21.5	22	24	24.5	



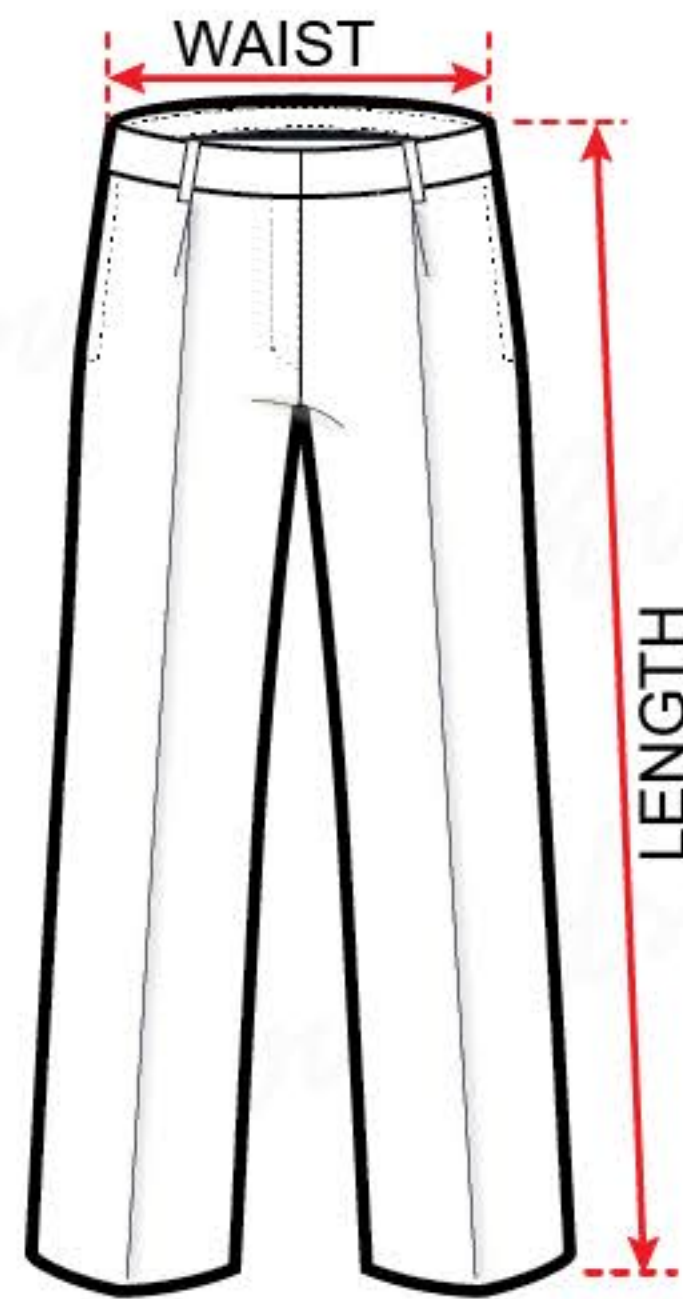
SKORTS

SIZE:	2	4	6	8	10	12	14	16
AGE:	3-4	4-5	5-6	6-7	7-8	9-10	10-11	11-12
FULL BODY WAIST:	20-20.5	20.5-21	21-21.5	21.5-22	22-22.5	22.5-23	23.5-24	24.5-25.5
½ GARMET WASIT: (RELAXED)	9	10	11	12	13	14	15	16
½ GARMET WASIT: (EXTENDED)	11	12	13	14	15	16	17	18
GARMET LENGTH:	11.5	12.5	13.5	14.5	15.5	16.5	17.5	18

SIZE:	18	20	22					
AGE:	12-13	13-14	14-15Y					
FULL BODY WAIST:	25.5-26	26.5-27	27.5-28					
½ GARMET WASIT: (RELAXED)	17	18	19					
½ GARMET WASIT: (EXTENDED)	19	20	21					
GARMET LENGTH:	18.5	19	19.5					

*** All measurements are in Inches.**
THESE SIZES ARE ONLY A GUIDE AND MAY VARY FOR THE INDIVIDUAL BODY TYPE.

MEASUREMENT
IMG FOR BOYS & GIRLS



BOYS TROUSERS

SIZE:	4	6	8	10	12	14	16	18
AGE:	3-4	4-5	5-6	7-8	9-10	10-11	11-12	12-13
FULL BODY WAIST:	19-20.5	21-21.5	22-23	24-25	25.5-26.5	27-28	29-29.5	30-31
½ GARMENT WASIT: (RELAXED)	9	10	10.5	11	11.5	12	12.5	13
½ GARMENT WASIT: (EXTENDED)	11.5	12.5	13	13.5	14	14.5	15	15.5
GARMENT LENGTH:	25.5	27.5	28.5	29.5	30.5	31.5	32.5	34

SIZE:	20	22	24	26	28	30	32	34
AGE:	13-14	14-15Y	15-16Y	YOUTH 1	YOUTH 2	YOUTH 3	YOUTH 4	YOUTH 5
FULL BODY WAIST:	31-32	32.5-33	33-34	35-36	36.5-37	38.5-40.5	42.5-44	47-48.5
½ GARMENT WASIT: (RELAXED)	13.5	14	14.5	16.5	18.5	20.5	22.5	24.5
½ GARMENT WASIT: (EXTENDED)	16	16.5	17.5	19	21	23	25	27
GARMENT LENGTH:	35.5	36.5	41.5	42	43.5	44	44.5	45

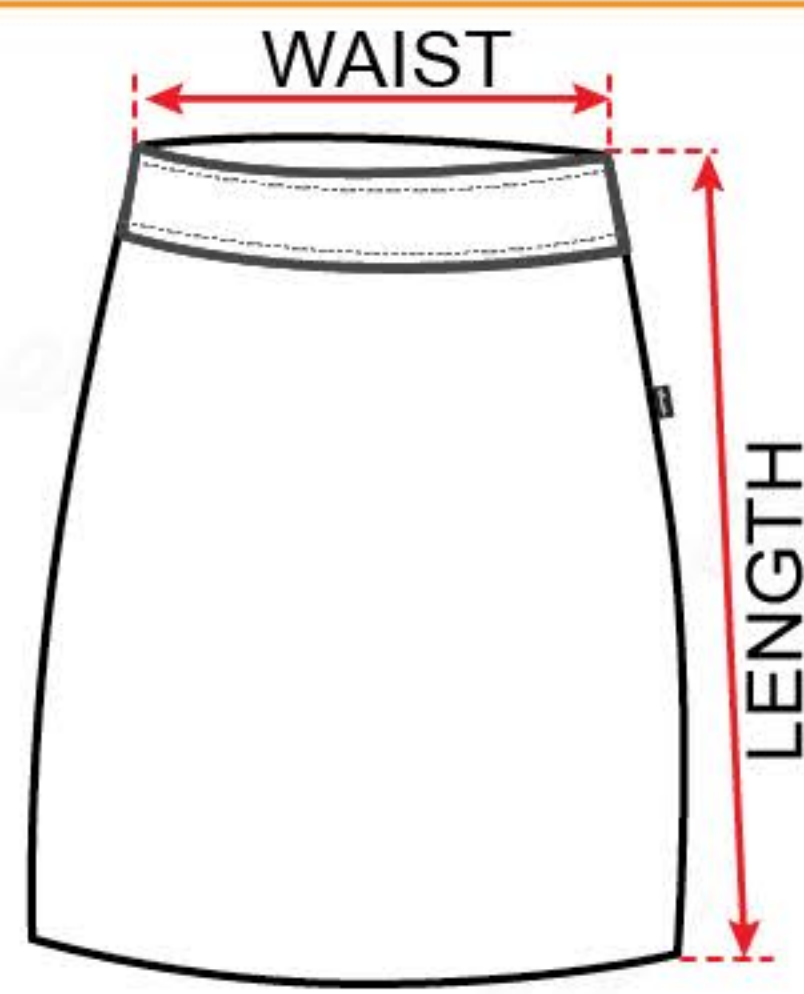
GIRLS TROUSERS

SIZE:	4	6	8	10	12	14	16	18
AGE:	3-4	4-5	5-6	7-8	9-10	10-11	11-12	12-13
FULL BODY WAIST:	19-20.5	21-21.5	22-23	23.5-24.5	25-26	26.5-27	27.5-28.5	29-30
½ GARMENT WASIT: (RELAXED)	9.5	10	10.5	11	11.5	12	12.5	13
½ GARMENT WASIT: (EXTENDED)	11.5	12	12.5	13	13.5	14	14.5	15.5
GARMENT LENGTH:	25.5	26.5	27.5	28.5	29.5	30.5	31.5	31.5

SIZE:	20	22	24	26	28	30	32	
AGE:	13-14	14-15Y	15-16Y	YOUTH 1	YOUTH 2	YOUTH 3	YOUTH 4	
FULL BODY WAIST:	30-31	31-32	32-32.5	33-34	34.5-35	35.5-37	38-39	
½ GARMENT WASIT: (RELAXED)	13.5	14	14.5	15.5	16.5	17.5	18.5	
½ GARMENT WASIT: (EXTENDED)	15.5	16	16.5	17.5	18.5	19.5	20.5	
GARMENT LENGTH:	32.5	34	36	36.5	37	37.5	39.5	

*** All measurements are in Inches.**

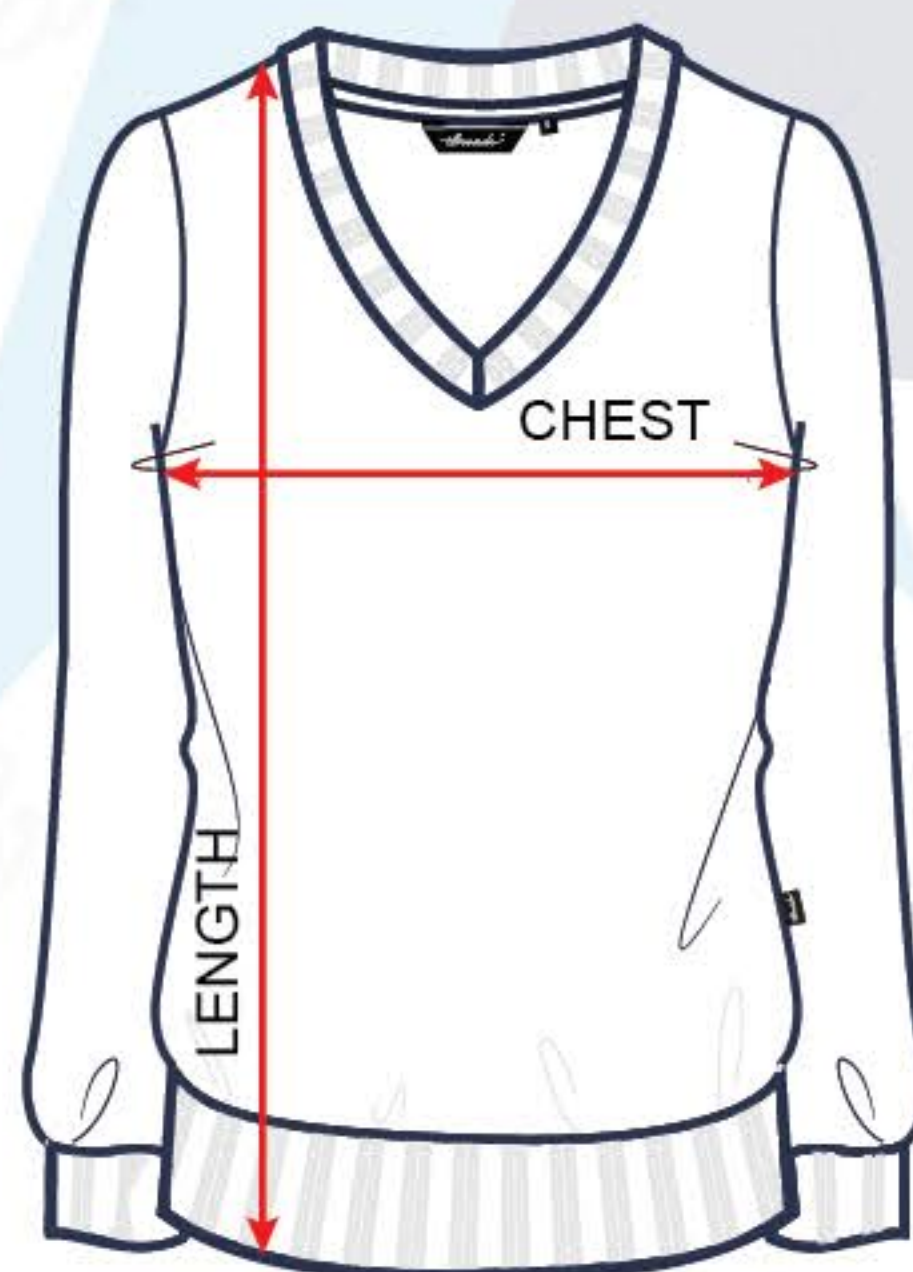
**THESE SIZES ARE ONLY A GUIDE AND MAY VARY FOR THE
INDIVIDUAL BODY TYPE.**



KNEE SKIRT

SIZE:	2	4	6	8	10	12	14	16
AGE:	4-5	5-7	8-10	11-12	12-13	13-14	13-14	YOUTH 1
FULL BODY WAIST:	18-19	19.5-20	21-22	22.5-23.5	24-25.5	26.5-27	27.5-28.5	29.5-30.5
½ GARMENT WASIT: (RELAXED)	8.5	8.5	9.5	10.5	11.5	12.5	14	15.5
½ GARMENT WASIT: (EXTENDED)	10.5	10.5	11.5	12.5	13.5	14.5	16	17.5
GARMENT LENGTH:	15	16	17	18	19	20	21	22

SIZE:	18	20	22	24				
AGE:	YOUTH 2	YOUTH 3	YOUTH 4	YOUTH 5				
FULL BODY WAIST:	32-34	36-39	40-42	43-45				
½ GARMENT WASIT: (RELAXED)	17	19	20.5	22				
½ GARMENT WASIT: (EXTENDED)	19	21	22.5	24				
GARMENT LENGTH:	23.5	23.5	24.5	24.5				



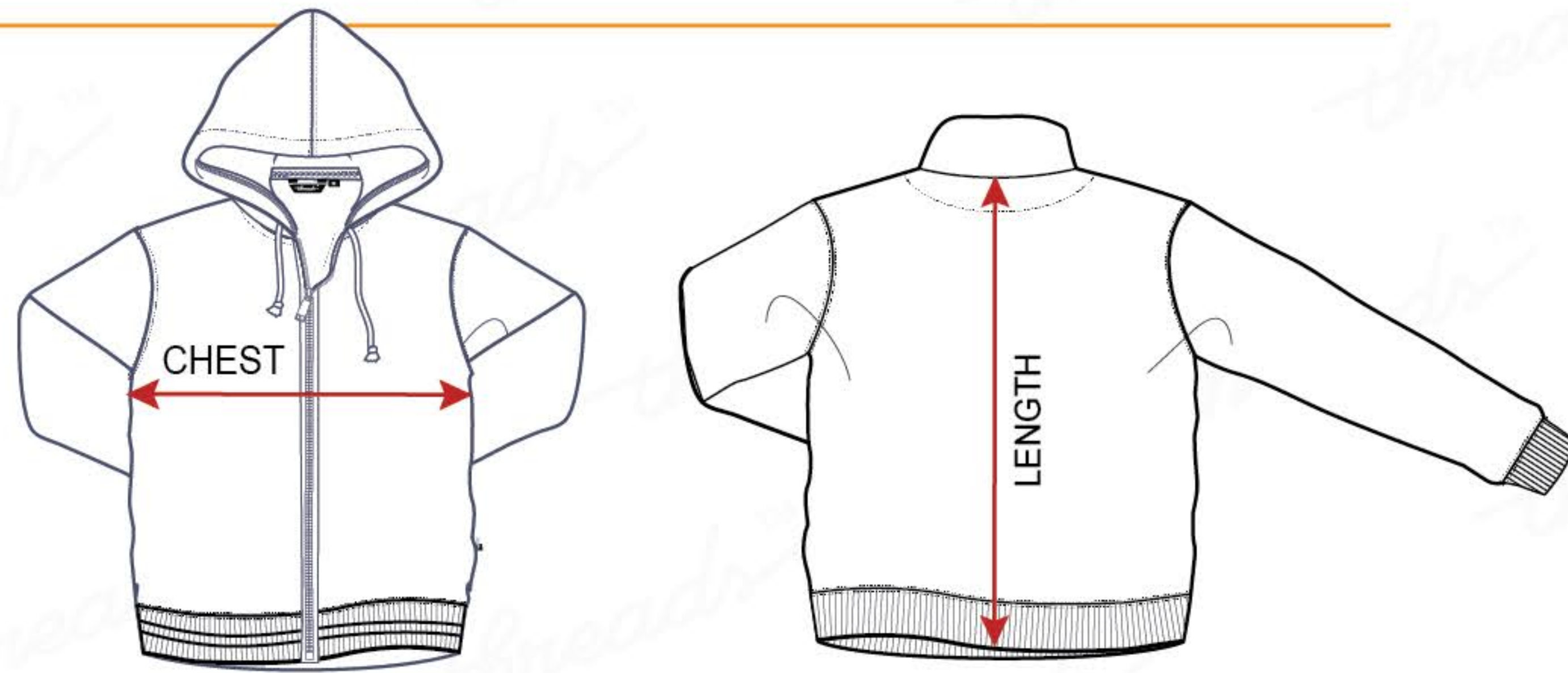
PULLOVER

SIZE:	18	20	22	24	26	28	30	32
AGE:	3-4	4-5	5-6	7-8	9-10	11-12	13-14	15-16
FULL BODY CHEST:	20-20.5	20.5-21.5	24-24.5	25-26	26.5-27.5	28.5-30.5	31.5-33.5	35-37
½ GARMENT CHEST:	11	12	13	14.5	15.5	17	18.5	20
GARMENT LENGTH:	15.5	16	17	19	20.5	21.5	22.5	24

	34	36	38	40	42	44		
AGE:	YOUTH 1	YOUTH 2	YOUTH 3	YOUTH 4	YOUTH 5	YOUTH 6		
FULL BODY CHEST:	38-39	39.5-40	41-43	43.5-45.5	46-47	47.5-49		
½ GARMENT CHEST:	21	22	23.5	25	26.5	28		
GARMENT LENGTH:	25.5	27.5	29.5	31	33	35		

*** All measurements are in Inches.**

THESE SIZES ARE ONLY A GUIDE AND MAY VARY FOR THE INDIVIDUAL BODY TYPE.



HOODIE/JACKET

SIZE:	2	4	6	8	10	12	14	16
	3XS	2XS	XS	S	M	L	XL	2XL
AGE:	3-4	5-6	7-8	9-10	11-12	13-14	15-16	YOUTH 1
FULL BODY CHEST:	22-23	24-25	26-27.5	29-30	32-34	35-37	38-39	40-41
½ GARMENT CHEST:	13	14	15.5	17	18.5	20	21.5	22.5
GARMENT LENGTH:	18	19	20	21.5	22.5	24	25.5	27

SIZE:	18	20	22					
	3XL	4XL	5XL					
AGE:	YOUTH 2	YOUTH 3	YOUTH 4					
FULL BODY CHEST:	41.5-43	45-47	48-50					
½ GARMENT CHEST:	23.5	25	27					
GARMENT LENGTH:	29	31	33					



TIE

SIZE:	13	15	54	59				
LENGTH	13	15	54	59				

SHOES

UK SIZE	9	10	11	12	13	1	2	3	3.5	4	4.5	5	6	7	8	9	10	11	12	13
EU SIZE	27	28	29	30	31	32	33	34	35	36	37	38	39	40	41	42	43	44	45	46

***All measurements are in Inches.**
THESE SIZES ARE ONLY A GUIDE AND MAY VARY FOR THE
INDIVIDUAL BODY TYPE.

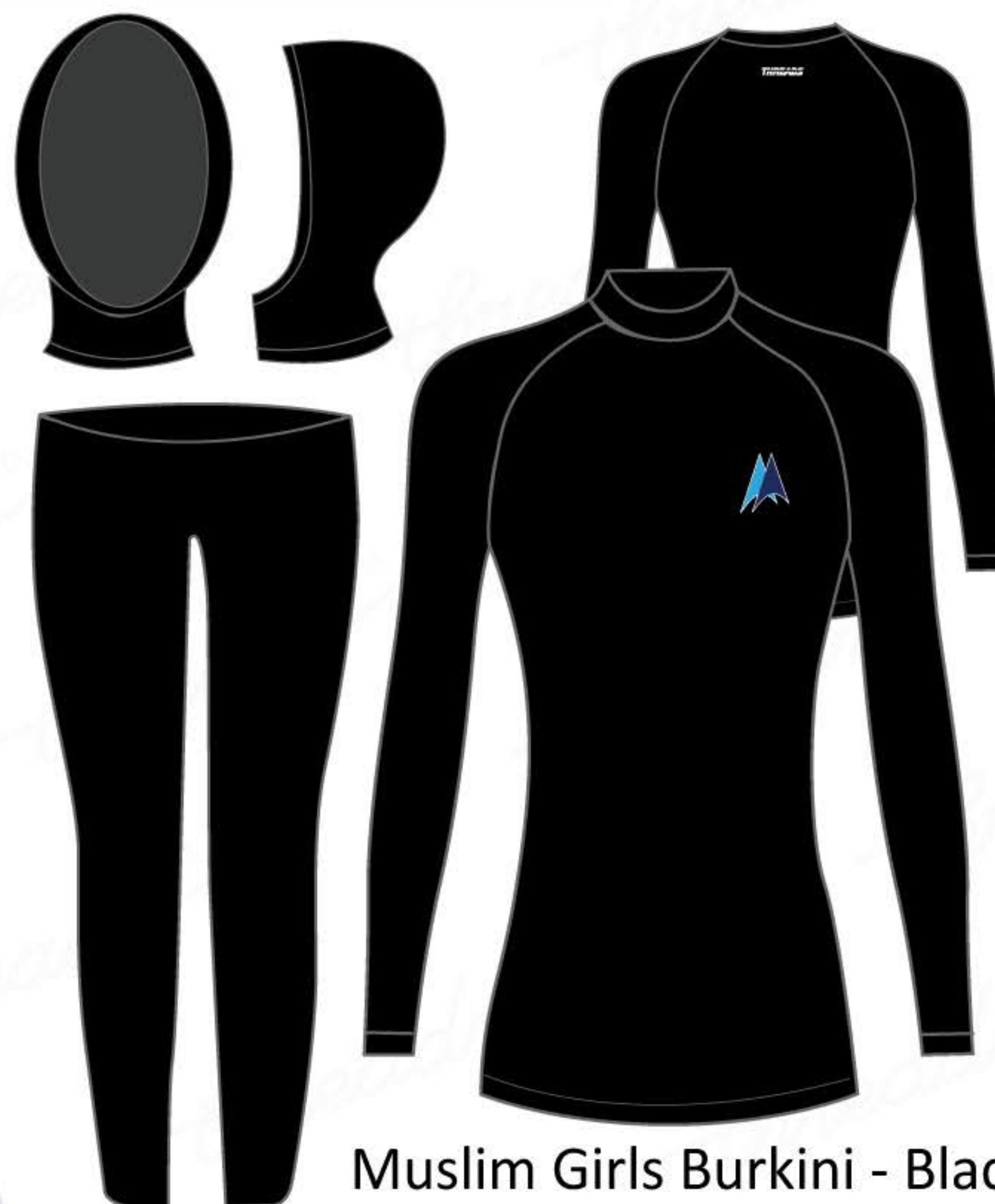
Iron on name labels are used to identify the clothes of your children. Our Iron on name labels are perfect for labelling virtually any type of clothing garment. The Iron on labels are suitable for any fabric which can be ironed. Iron on labels take seconds to apply and are guaranteed not to peel off or fade in a hurry. Please make sure you follow the below instructions.

- Remove a label from the clear backing material
- Set your iron to the hottest setting. **NO STEAM...!**
- Wait until the iron gets hot
- Place label on garment in desired position
- Cover label with a thin white clear A4 paper
- **FIRMLY** press heated iron on A4 paper for 15 seconds
- Verify your application time and iron temperature
- Apply labels to **CLEAN**, thoroughly dry garments only. Labels applied to soiled or damp garments will not adhere properly
- Allow garment and label to cool to room temperature. Then try to peel the label off with your fingernail. If you can peel it off, your iron is not hot enough. Use another iron or reapply it for 15-20 seconds

Jennifer



Girls Swimsuit



Muslim Girls Burkini - Black

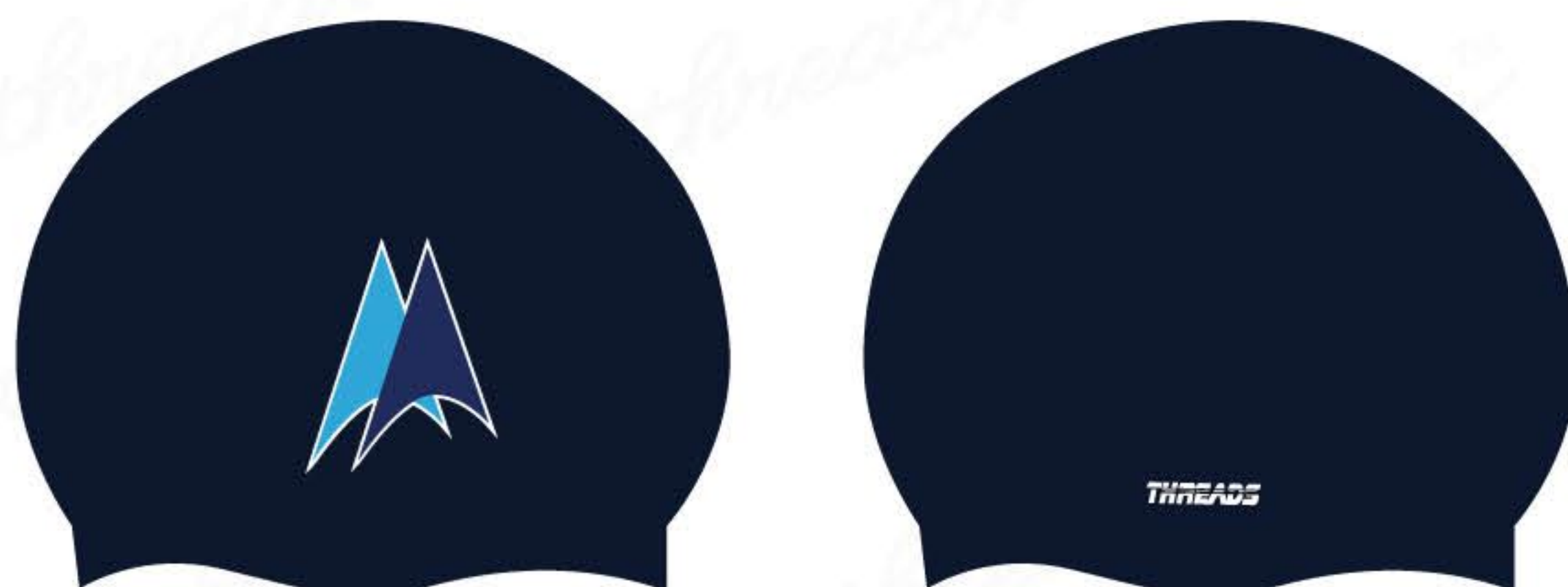
Boys Jammer



Boys Swimming Trunk



Unisex Cap





www.threadsme.com

